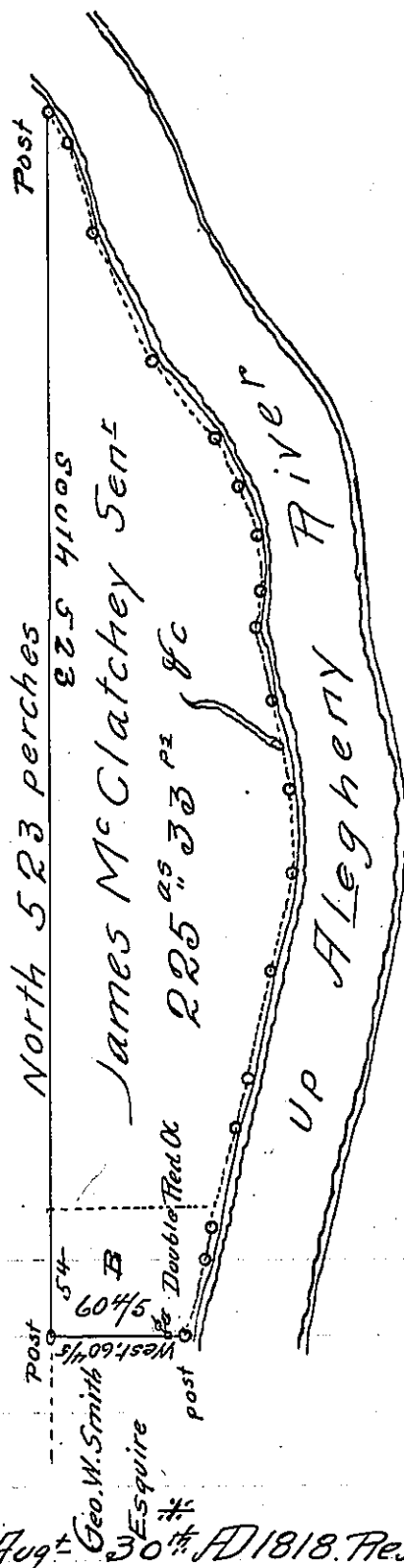


Courses and distances of the Survey of James McClatchey Down the river

S	25	E	14 perches
S	18	E	40
S	26	E	60
S	37 1/2	E	45
S	28	E	24
S	14	E	20
S	5	E	26
S	1	W	14
S	9	E	32
S	13	E	18
S	16	E	21
South			36
S	8 1/2	W	44
S	13	W	48
S	14	W	20
S	17	W	44
S	10	W	12 and
S	12	W	34 perches

Dist. = 552 perches

Lands of James Craig, James Waterson, Sent and others



In pursuance of a Warrant dated Aug³⁰th 1818. Resurveyed the above described tract of land on the day of October 1829 containing Two hundred and twenty five acres thirty three perches and the allowance of six p^t 6^t 8^c. Situate in Sugar Creek township Armstrong county bounded by the Allegheny River lands of James Waterson James Craig and Geo. W. Smith Esq.

The first survey of the land represented by the above draught was made by the Hon^{ble} Rob^t Orr then Deputy surveyor, in pursuance of the above recited warrant, but by reason of an adverse claim to that part the land represented by the figure including the letter

B - a return had been delayed.
Jacob Spangler

Robert Richards D.S.

Gabriel Hiestor Esquire

say 13th

Surveyor General

IN TESTIMONY that the above is a copy of the original remaining on file in the Department of Internal Affairs of Pennsylvania, made conformably to an Act of Assembly approved the 16th day of February, 1833, I have hereunto set my Hand and caused the Seal of said Department to be affixed at Harrisburg, this thirty first day of January 1906

Loac R. Brown
Secretary of Internal Affairs.